

Fall 2011—Mississauga Ontario Tree Risk Assessment in the Urban Area and the Urban/Rural Interface



With Instructor Dr. Julian Dunster

This two-day program, administered by the PNW Chapter of the ISA, is a new course and accreditation that was developed in consultation with WorkSafe British Columbia (WCB), British Columbia Hydro, Wildlife and Danger Tree Committee of British Columbia, and numerous reviewers around North America.



- Utilizing the most current theory, practice, and technical concepts employed in arboriculture.
- Providing high standards of competence ensuring those accredited are skilled, knowledgeable, and fully aware of professional responsibilities.
- Promoting safety and sound arboriculture.

**Please join us for this two-day program
October 24 & 25, 2011 in Mississauga Ontario**

Sold Out

**Due to high demand a
second class has been
added for Oct 27 & 28!**



Location : Cawthra Estate
1507 Cawthra Road
Mississauga ON L5E 1T8

**Register or Inquire Today!
Attendance is limited
10 ISA CEUs are available**

To register

Call: (905)274-1022

Email: info@ufis.ca

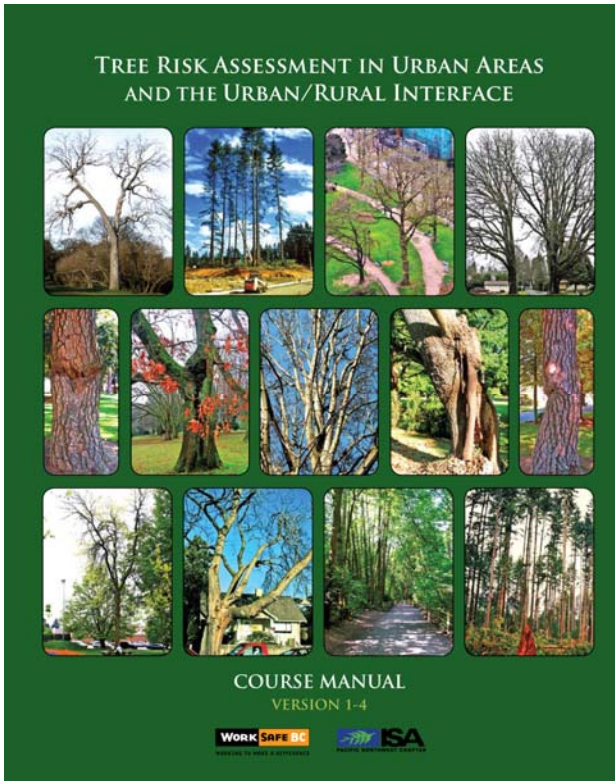
Sponsored by:



Urban Forest
Innovative Solutions

Prerequisites—Pre-study Required

Participants will receive the course manual three to four weeks in advance and are required to read and study in detail before attending the course. Candidates are expected to have the ability to identify tree species, native or exotic, and to understand and apply basic biology, mechanics, risk assessment, and risk management concepts.



Program Overview

This course is administered by the Pacific Northwest Chapter of the International Society of Arboriculture (PNW-ISA).

The need for the course was defined in British Columbia by a tree-caused fatality in 2000 which helped WCB focus attention on worker safety on golf courses and in urban areas. PNW-ISA approached WCB to explore ways to design and implement a training course for the assessment of trees in urban areas and in the urban/rural interface areas. These discussions resulted in a project, funded by WCB, PNW-ISA, and BC Hydro, to develop a completely new course and accreditation. The course design work was undertaken by Dr. Julian Dunster of Dunster & Associates Ltd.

The effort involved several years of extensive research, testing, and review of the materials. In the summer of 2004, WorkSafe BC recognized the course and credential as an accepted industry standard in British Columbia. After a successful 2005 course launch in British Columbia, the course is now being offered in various locations across North America

Course Information

The two-day course trains participants in the process of tree risk assessment. The combination of classroom lectures and field work includes modules on biology, structural mechanics, risk theory and practice, reading tree conditions, assessing and assigning risk levels, and prescribing risk mitigation strategies.

Upon successful completion of the course, participants will be accredited as **Certified Tree Risk Assessors** and meet current industry standards. This course applies to all work activities in and around trees located in urban and urban/rural interface areas. These include municipal or regional parks, golf courses, and other public land, development and construction sites, utility corridors, highways, railways, and rapid transit rights of way, riparian corridors, bicycle and hiking trails, greenways, and all private lands where risk assessment is requested to fulfill municipal, regional, provincial, or insurance company requirements.

Eligibility

Eligibility for the course is determined by country of origin. Proof of qualification is required with course registration form.

Participants from Canada must be qualified and in good standing with at least one of the following:

- Certified Arborist with the International Society of Arboriculture
- Registered Professional Forester in Canada
- Registered Forest Technician in Canada
- Registered Consulting Arborist with the American Society of Consulting Arborists ASCA

Participants from the **United States** must be qualified and in good standing with at least one of the following:

- Certified Arborist with the International Society of Arboriculture
- Certified Forester with the Society of American Foresters
- Registered Consulting Arborist with the American Society of Consulting Arborists ASCA

Equipment

- Required: Hard hat, field notebook, appropriate outdoor clothing
- Suggested: clinometers, binoculars, diameter tape

Course Examination

The closed book exam is 2.5 hours in length. A mark of 85% or better is required to pass. Upon successful completion of the course, participants will be accredited as Certified Tree Risk Assessors. The qualification is valid for four years from the course date (month end). Those who score less than 85% are eligible for a retake exam (fees apply).

Course Fees

Course & Exam.....	\$615 + \$79.95 HST
Retake Exam	\$175 + \$26.25 HST

Limited Seating

Seating is limited to 17 registrants per course. Please register early to secure your seat.

Course Schedule

This is a two-day course. Day One lectures cover all material in the course manual. On Day Two, a morning outdoor field session helps participants learn how theory integrates into practice. The morning will be spent examining trees and practicing assessment skills and data recording.

The exam is held on the afternoon of Day Two for 2.5 hours. A mark of 85% or better is required to pass. Those who score less than 85% are eligible for a retake exam (fees apply).

Check In / Meals / Lodging

Day One check-in is at 8:15 AM. The indoor course runs from 8:30 AM to 4:30 PM.

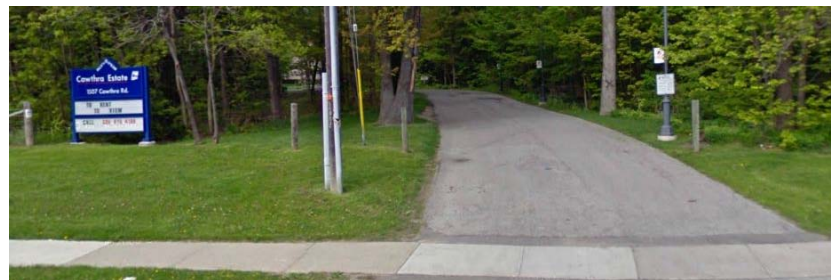
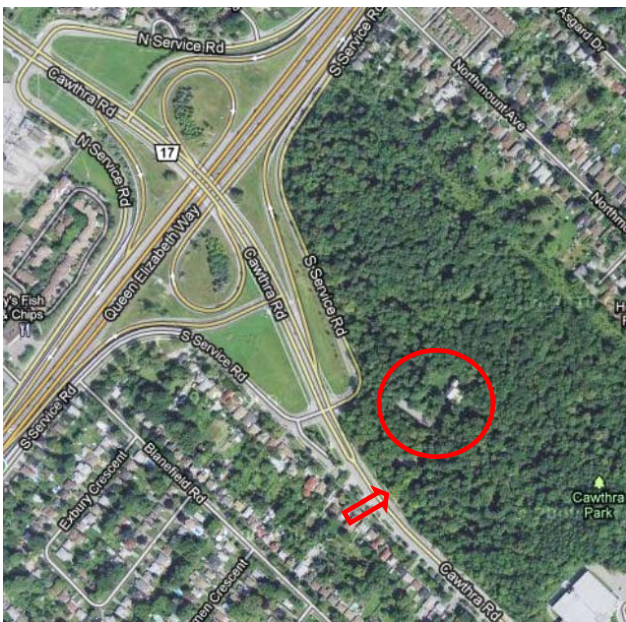
Day Two check-in is at 7:45 AM. The outdoor segment runs from 8 AM to 12 Noon.

The afternoon exam begins after lunch at 1:00 PM . Time allotted for the exam is 2.5 hours.

Lunch and refreshments are provided both days. Dinner, snacks, and any overnight lodging requirements are the participant's responsibility. Time is afforded on both days for short breaks and lunch.

Map

City of Mississauga, Cawthra Estate Main Floor 1507 Cawthra Road Mississauga ON L5E 1T8



Access to Cawthra Estate is made directly off Cawthra Road south of the QEW and the South Service Road. Free parking is available.

The outdoor segment on day two will take place in Cawthra Park on the grounds surrounding the Estate

